

A photograph of the interior of a BAM Karaoke Box. The room is dimly lit with warm, golden-brown lights. In the center, a woman in a long, shimmering blue sequined dress stands on a small stage, singing into a microphone. To her left, a large white screen displays a bright, overexposed image. In the foreground, several people are seated at tables, watching the performance. The background features a bar area with shelves of bottles and a person standing behind the counter. The overall atmosphere is intimate and lively.

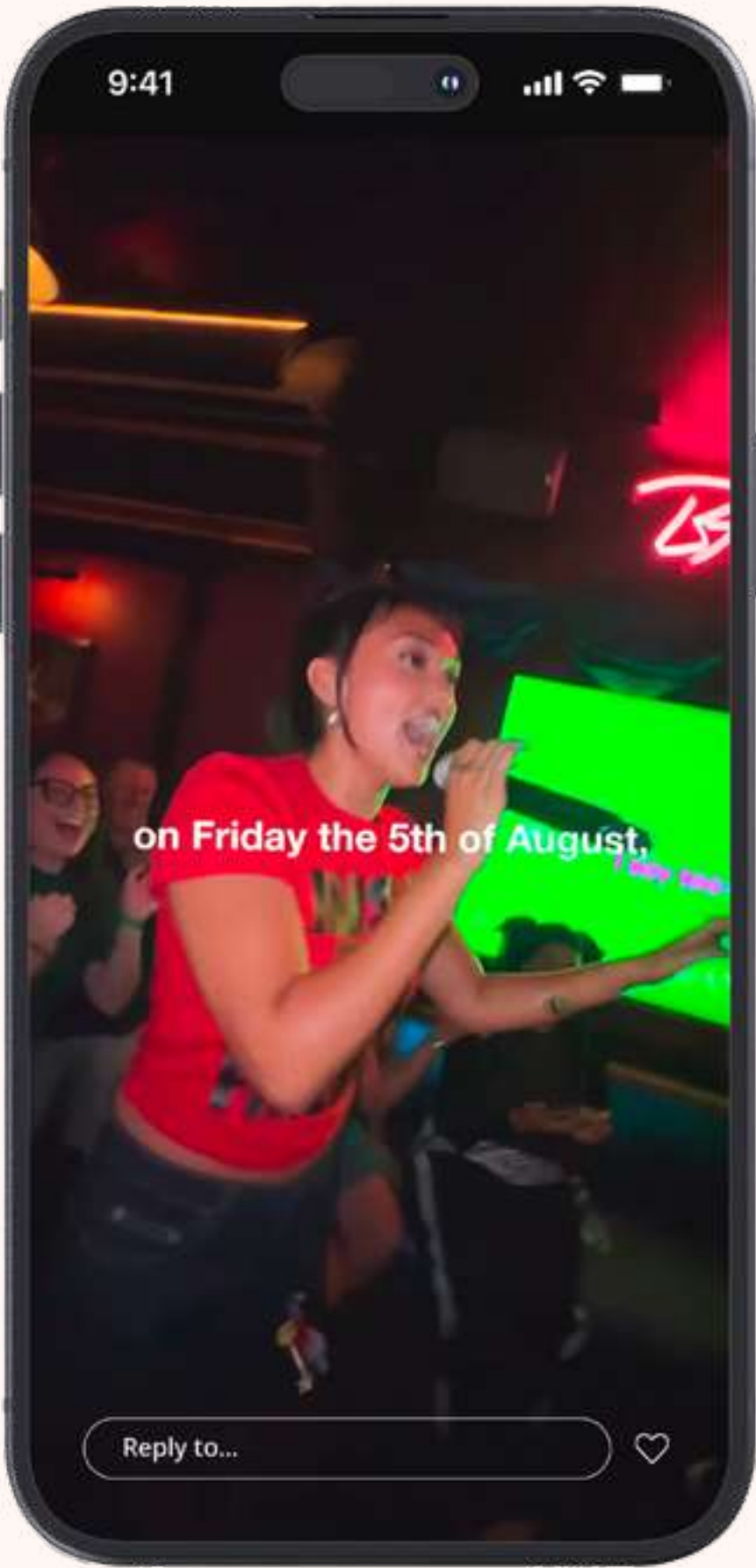
BAM

KARAOKE BOX

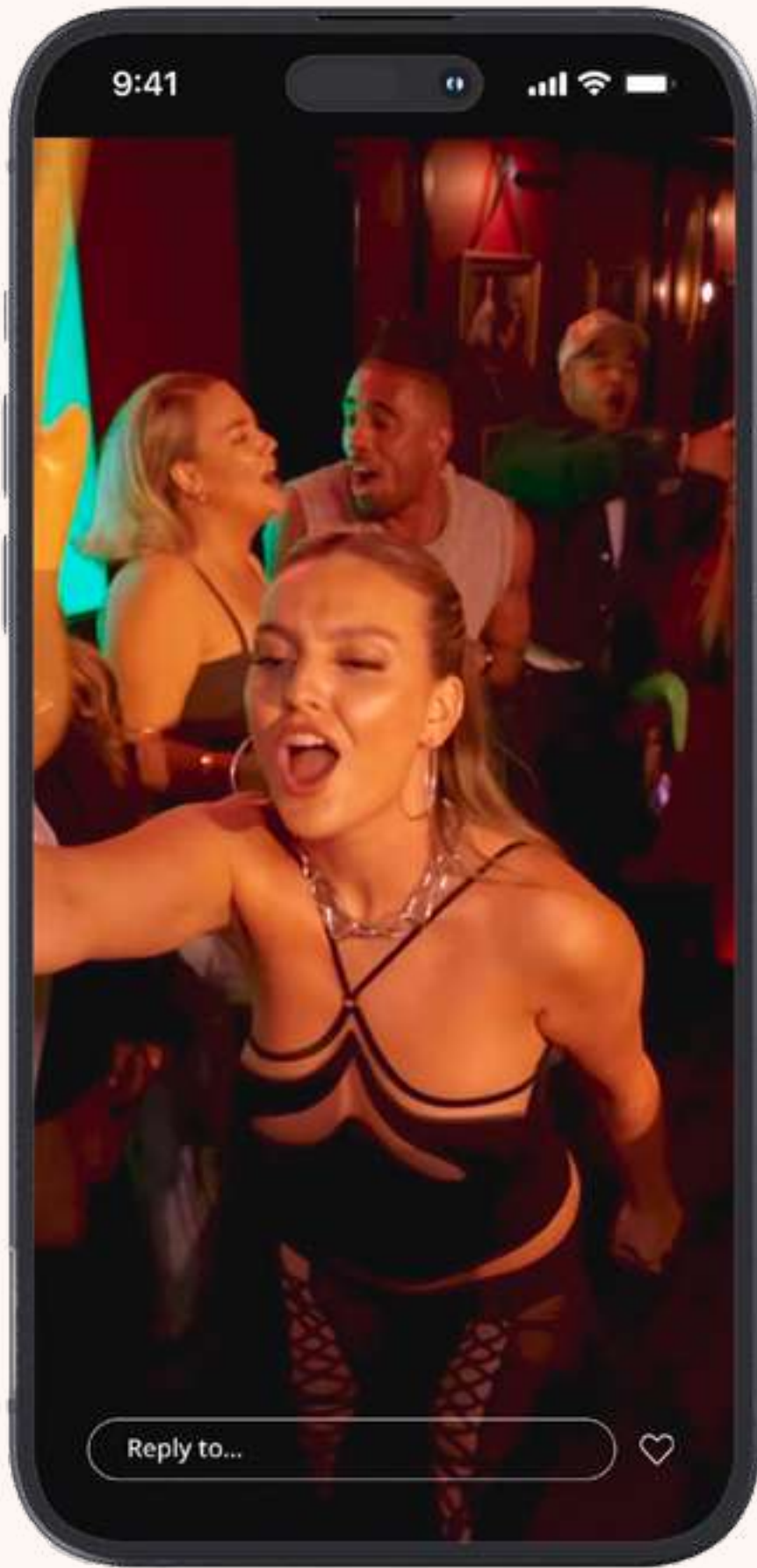
Music Events and Experiences
at BAM Karaoke Box

- I. PREVIOUS EVENTS AT BAM
- II. SPACES AVAILABLE AT BAM
- III. ACCESS AND INFORMATION
- IV. AUDIO VISUAL INFORMATION
- V. BESPOKE KARAOKE PLAYLISTS
- VI. OPENING TIMES
- VII. CAPACITY

Previous Events at BAM include



Joy Crookes
Fans Karaoke Party



Perrie Edwards
New single launch



Maleek Berry
New single launch



Self Esteem
New album launch

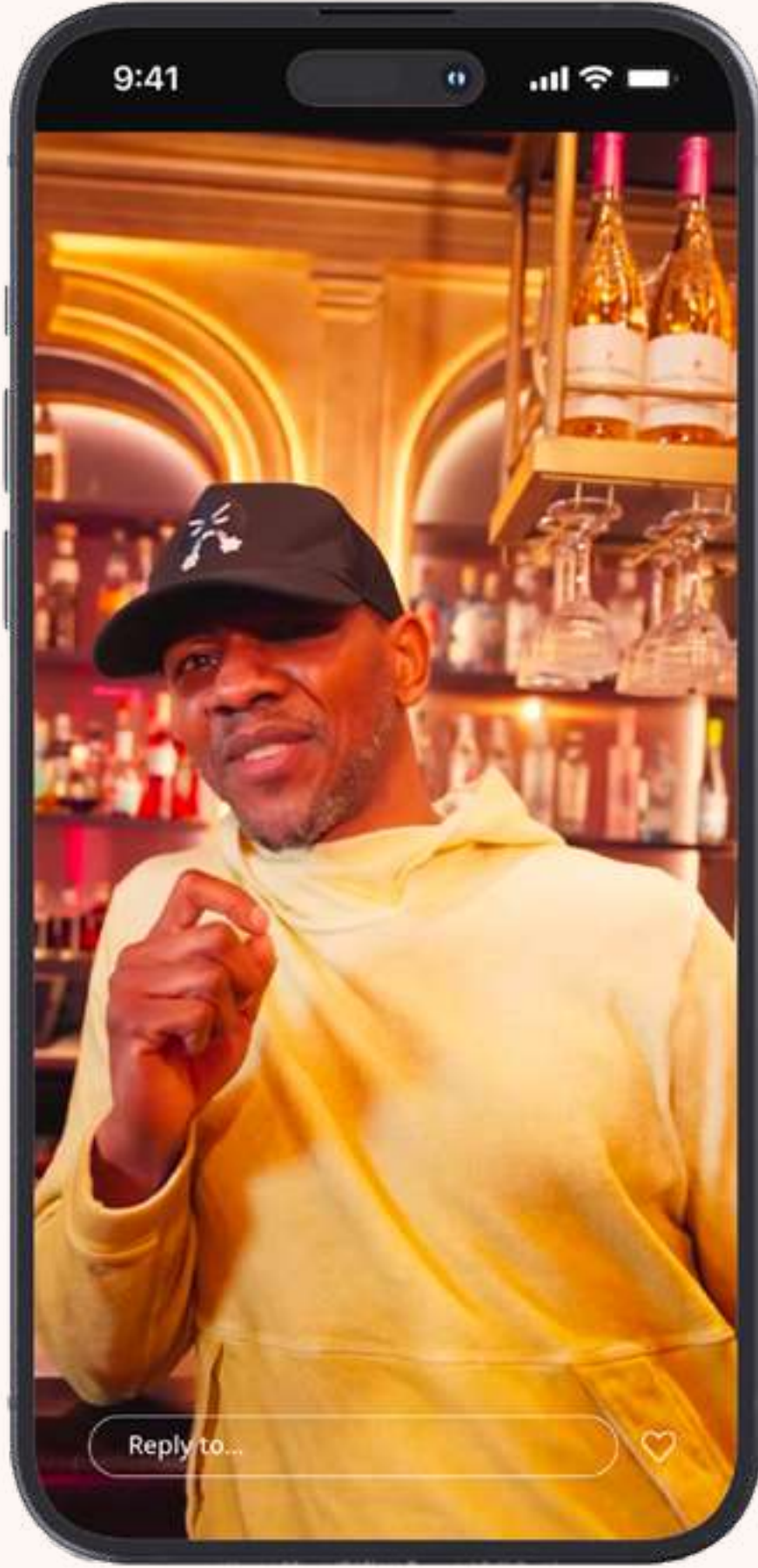
Previous Events at BAM include



Davina McCall
Garnier partnership



Jojo Siwa & Jordan North
Capital FM activation



Giggs
YouTube interview



Alice Brine & Chris Hall
Comedy night events

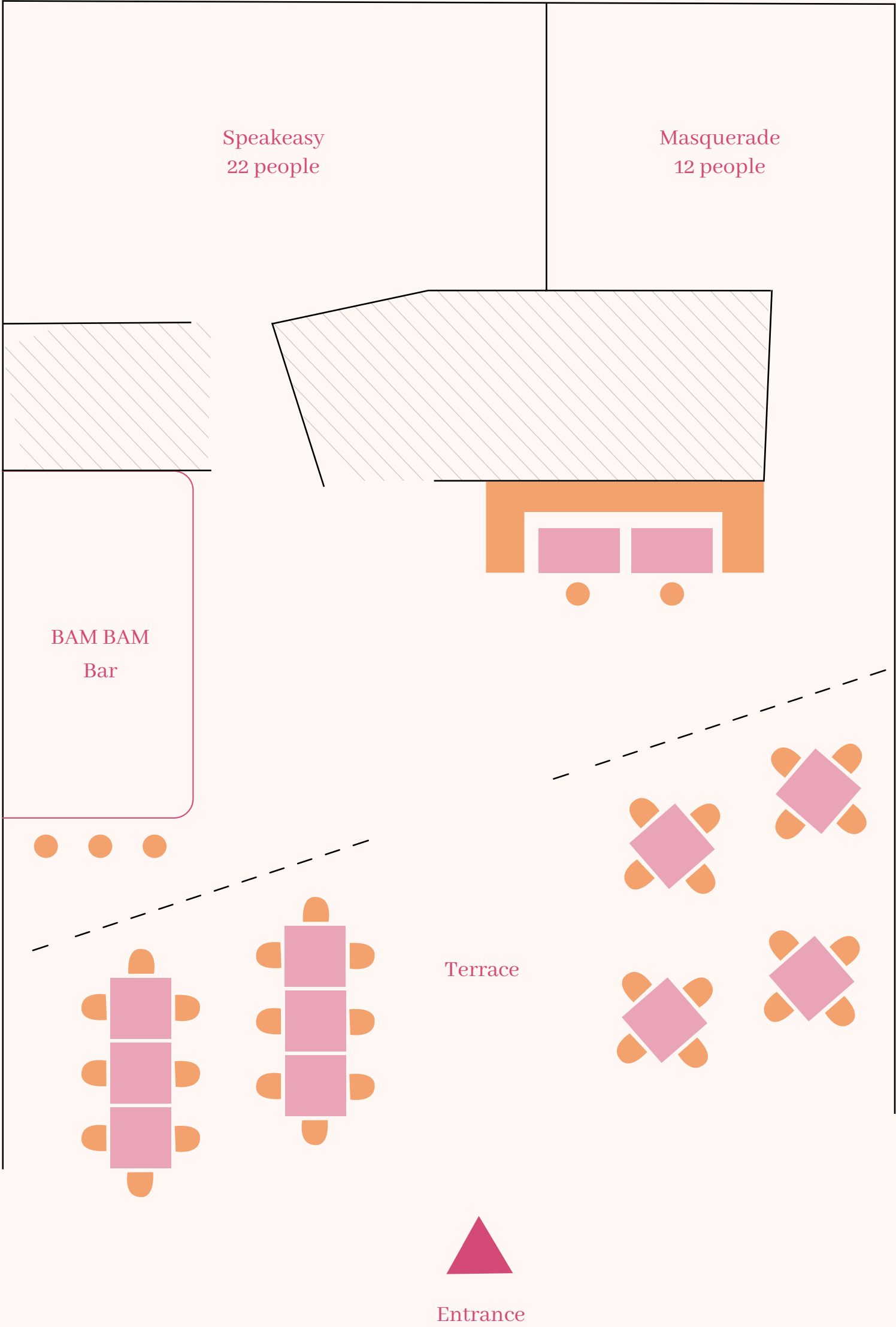
Spaces Available at BAM

Lower Ground Floor Plan



Spaces Available at BAM

Ground Floor Plan



| Area | Capacity |
|---------------|------------------|
| Terrace | 25 people |
| Karaoke Rooms | 34 people |
| BAM BAM Bar | 15 people |
| Total | 74 people |

To book, please contact:
hire@bam-karaokebox.com
+44 0203 7402205

Access and Information

Loading Bay: We have the loading bay located at Back Kingsgate Parade, SW1E 6SQ. There is a 958mm door which external equipment will need to be able to break down so that it can enter into the venue. Please note that deliveries and breakdowns will need to occur in opening hours of the venue. All supplied equipment and additions will need to be cleared on the night once the event has concluded. Lastly, please note that there is no permanent parking in the loading bay.

Parking:

You can park outside BAM from 6pm on week days, for all other timings, parking will need to be arranged separately.

Disabled Access:

We also have disabled access via our elevator from GF to LGF as well as disabled bathrooms. Please flag if this is required and a member of our team will be allocated to assist with arrivals.



Audio Visual Information

DJ & Audio Equipment:

- CJ3000
- DJM A-9 mixing deck
- Bose Speaker Sound System

If supplying your own DJ for the event but utilising the equipment, we would strongly recommend confirming a rehearsal in advance of the date. Additionally, a damage waiver will need to be signed ahead of the event. We can provide an image of this equipment set-up, if required. We require DJs to bring their own music and headphones for events.

BAM BAM Bar Screen:

- Display Width - 1897.8mm
- Display Depth - 56.7mm
- Display Height - 1080.8mm

This screen can be used to display logos, graphics, or videos via a laptop with a HDMI plug in within the DJ Booth. We can accept file types in the following formats: PNG, jpeg, MP4. If you can share this 3-working days in advance, we can screen test this for you. We can also host live panels, with speakers joining the panel/venue remotely. This will require a pre-set meeting link and laptop.



Audio Visual Information

Microphones:

- x2 wireless Shure Microphones available in the BAM BAM Bar
- Further wired microphones can be provided on request - plugged in directly to the stage

Microphone Stands:

- x2 stands available

Instruments:

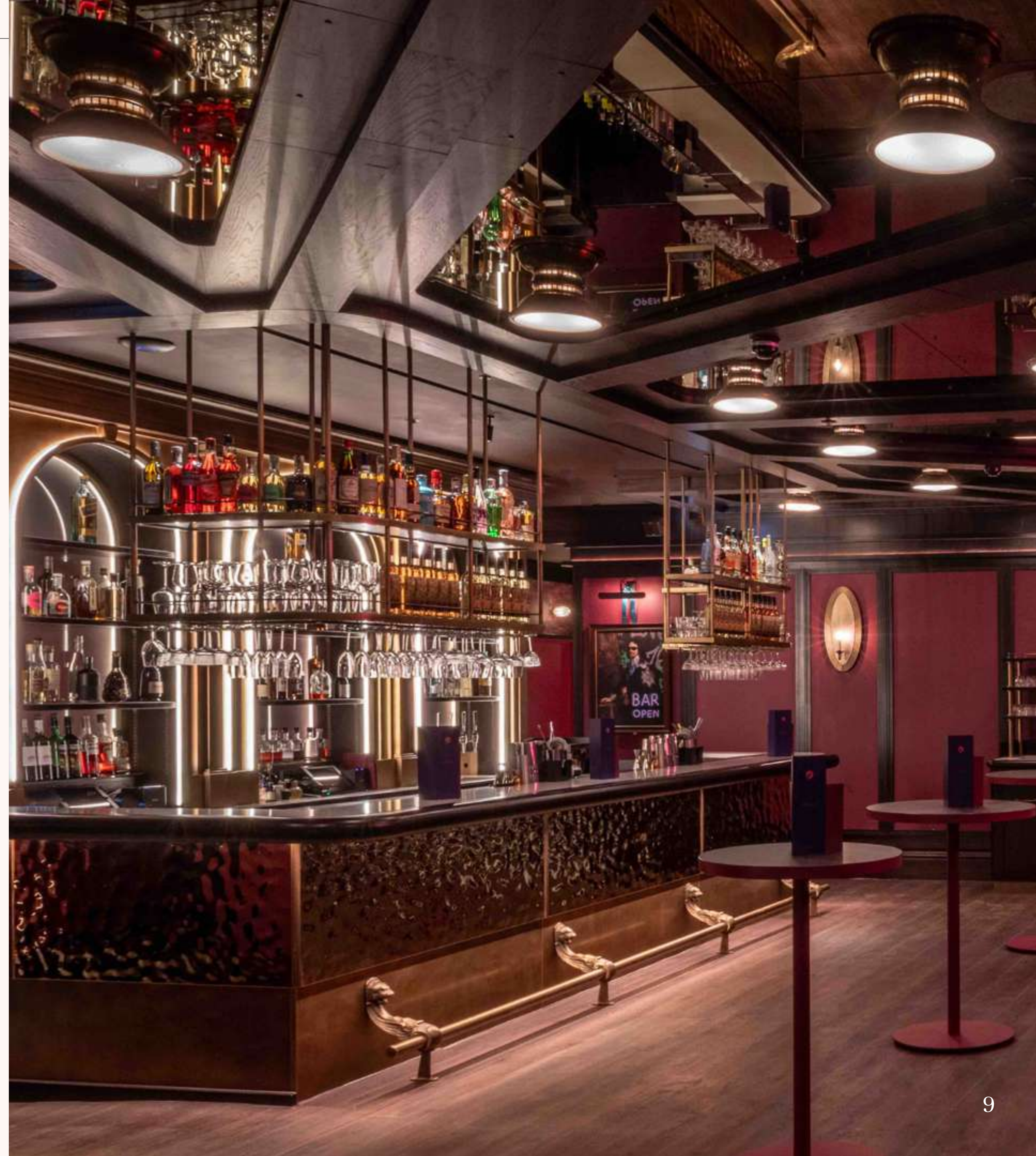
- Cocktail drum kit available, upon request

Lighting:

- Adjustable lighting available in the Bar, with set levels to chose from.
- Lighting can be brought into the venue by organiser.
- There are 3 power socket locations in the BAM BAM Bar available.

Stage:

Small elevated stage available in the BAM Bar. Please enquire for measurements and exact stage floor plans.



Bespoke Karaoke Playlists

BAM can produce a bespoke karaoke playlist in advance for your event if required, this will be managed by the BAM UK marketing team. New singles can be added to the karaoke software for listening parties and single launches but the team will require:

- The mp4 file with instrumental & lyrics laid overtop
- Any specific logos or graphics for playlist covers

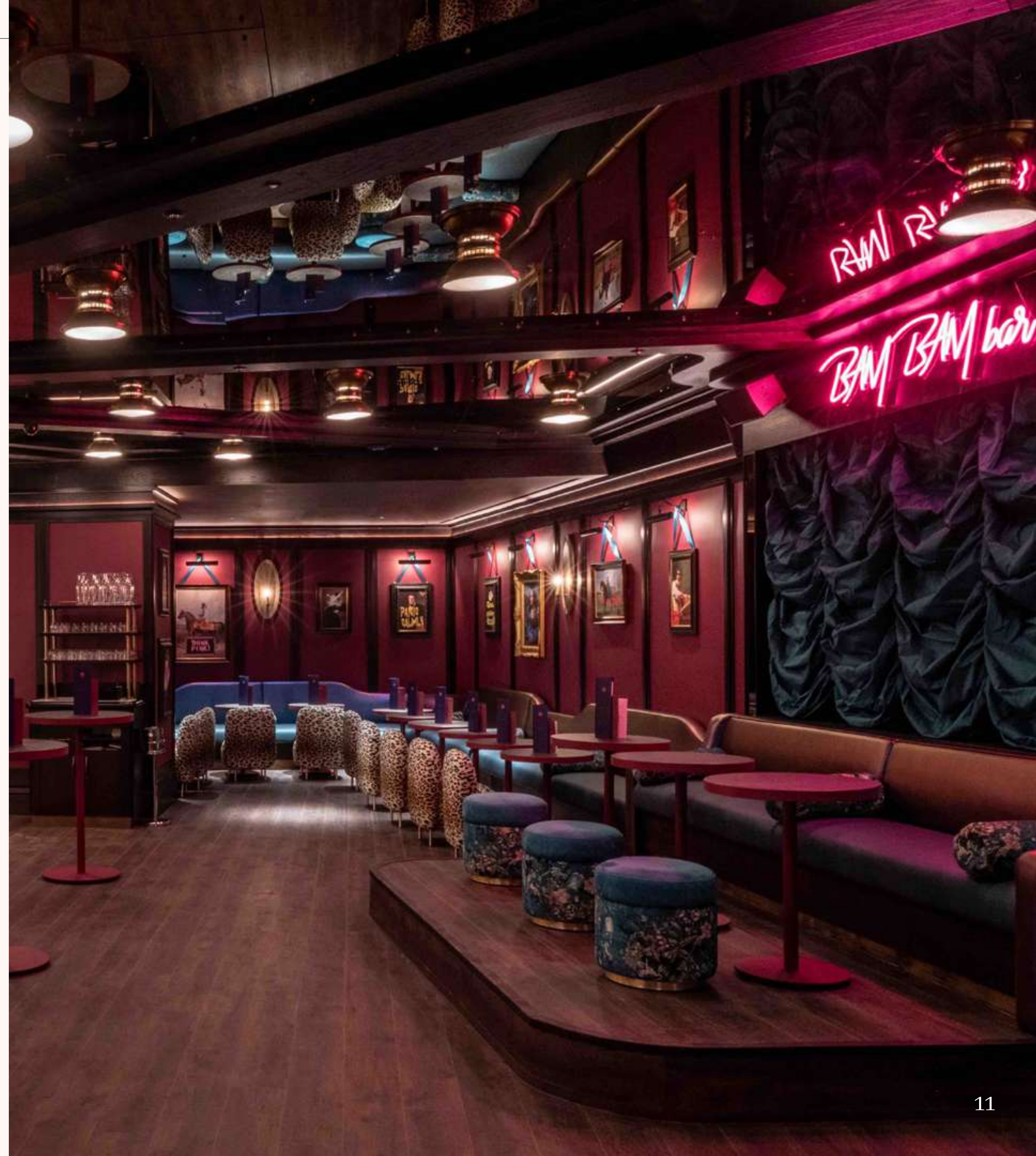
All files need to be submitted at least 72 hours in advance of event to allow enough time for testing and upload on to the system. The files will be deleted from the software afterwards.



Opening Times

- Mon - Tues: 3pm - 12:30am
- Weds - Fri: 3pm - 1:30am
- Sat: 12pm - 1:30am
- Sun: 12pm - 8pm

Additionally, we have the option of utilising late licenses for events requiring a later finish time. Also, if an earlier start is required than shown above, please do enquire with the team.



Capacity

The BAM BAM Bar has a standing capacity of 200 pax alone. For theatre style, this will be 70pax. However, for a full venue hire, we can host 420pax - this will include the BAM BAM Bar, Ground Floor Bar and all 22 private karaoke rooms. Also included within the space:

- Access to the 45,000+ karaoke catalogue (available in languages such as English, Spanish and French)
- Access to Games such as BAM Roulette, Name that Song (BAM Games - BAM Karaoke Box London), and soon BAM Battles
- Access to a complimentary cloakroom, situated on the Ground Floor
- Access to the Outdoor Terrace also on the Ground Floor
- Accessibility Lift available between the Ground Floor and Lower Ground Floor
- Food & Drink Menu Creation (if required, template provided by BAM’s marketing team)



Any other questions?

Please enquire via hire@bam-karaokebox.com
for any upcoming events or activations.

